

SawStop seeks to stop Bosch in court

By Jennifer Hicks

Just one week before the AWFS fair, one exhibitor filed suit against another exhibitor, claiming infringement on its patented safety-technology inventions.

SawStop is taking on Bosch in a dispute over table saws with similar flesh-detecting technology that stop a running blade.

SawStop filed federal complaints at the U.S. International Trade Commission and U.S. District Court in Oregon against Robert Bosch GmbH of Germany and its subsidiary, Robert Bosch Tool Corp., to stop alleged infringement of SawStop's patented inventions.

The complaint specifically refers to Bosch's introduction of the model GTS1041A Reaxx job-site saw with Active Response Technology that drops the blade below the tabletop after user contact. The blade is undamaged and the saw can be quickly reset for operation, according to Bosch. SawStop's system also drops the blade, but destroys it with an aluminum brake.

Specifically, SawStop has asked the USITC to investigate whether the Bosch Reaxx saw infringes various patents, and if so, to block

the importation and/or sale of those saws. The complaint filed in district court seeks damages, a permanent injunction and attorney fees.

The complaint, obtained by Woodshop News, is full of diagrams, photographs and specific details of the alleged patent violation. It chronicles the company's extensive research and development efforts and contains a mother's letter thanking SawStop for preventing a serious injury to her son.

It also lists six inventions by SawStop in which alleged infringement has occurred:

- A woodworking machine with a control system that monitors rotation of a cutting tool and triggers a reaction system only if the cutting tool is moving, thereby distinguishing between potentially safe and unsafe operator contact with the cutting tool.
- A woodworking machine with a control system that tests whether a reaction system is operational.
- A woodworking machine with a removable cartridge having a single-use component that

is expended upon triggering of the cartridge.

- A woodworking machine having a reaction system that retracts a cutting tool below a work surface within approximately 14 milliseconds after the detection of a dangerous condition.
- A woodworking machine having a reaction system that uses stored energy to move a component 1/32 of an inch within approximately 3 milliseconds after a dangerous condition is detected.
- A woodworking machine that retracts a cutting tool by pivoting it away from the cutting region.

"In order to judge whether Bosch uses SawStop's inventions, one must compare Bosch's saw to SawStop's patent claims, not to SawStop's job-site saw," SawStop vice president Matt Howard told Woodshop News. "SawStop's job-site saw, and any differences between SawStop's and Bosch's saws, are irrelevant to the question of infringement."

continued on Page 21



Build Your Holiday Table

Table Extension Slides

Order Online



Equalizer Slides



Standard Slides

In Stock & On Sale

Use VIP Code: **SNN0920**

For 20% off All Table Slides!

*Valid through 10/31/15

Order Online or By Phone:

1.866.963.5578 www.osborneparts.com

WOODWORKING, METAL WORKING & CONSTRUCTION

MACHINERY, TOOLS, EQUIPMENT & MORE

Solanco Area Fairgrounds
172 S. Lime St. On Rte. 472 S. in Quarryville, PA 17566



Fri & Sat
Sept. 25-26 2015

Booth Space Available - Call Now
717.933.8091
eastool.com (for Info, Vendors & Consignments)

SAWSTOP from Page 18

"At Bosch we protect our intellectual property and we also believe in the rights of other companies to protect their intellectual property," Bosch North America spokeswoman Linda Beckmeyer says. "The Bosch Reaxx job-site table saw is based on patented innovations done by the Power Tool Institute, with advance development done by the engineering team at Robert Bosch Tool Corp. in Mount Prospect, Ill. This research has resulted in more than a dozen U.S. patents. At Bosch, safety is a priority and we will work to defend consumers' rights to buy our products."

Howard said SawStop expected the USITC to start an investigation by the end of August and Bosch to respond within the following month. The USITC process generally takes about 18 months beginning to end. The pace of the case in district court will likely be much slower. Bosch says its saw will be available for sale this fall. SawStop's job-site saw has been on the market since spring.

"With regard to the future, SawStop continues to build on a decade of proven safety, with over 70,000 saws shipped and thousands of fingers saved. We continue to invest heavily in research and development as we seek to introduce safer and better woodworking tools. In fact, we just returned from the AWFS fair in Las Vegas, where our new job-site saw was recognized with the Visionary Award for product innovation. This acknowledgment of the groundbreaking innovation and safety of our new saw is evidence of our enduring dedication to the protection of woodworkers," Howard adds. **W**

Thermwood starts 3-D additive manufacturing program

Thermwood Corp., a manufacturer of 3- and 5-axis CNC routers, is developing a 3-D Additive Manufacturing System, capable of making large carbon-graphite-reinforced composite thermoplastic components.

Thermwood's systems utilizes a near net shape approach where a relatively large extruder, mounted to the machine, is used to heat, melt and deposit or print carbon-graphite-filled thermoplastic material to quickly create a structure that is almost, but not quite, the exact final shape. That structure, when it cools and hardens is then 5-axis machined to the final net shape, according to the company.

These new systems will be based on Thermwood's Model 77, semi-enclosed, high-wall gantry machine structures, which are currently offered in sizes up to 60' long.

This is an ongoing research and development program. Thermwood said it cannot say when commercial systems might be available to the market, but it believes this technology represents a major opportunity and that additive manufacturing will become a significant factor in the future of manufacturing.

For information, visit www.thermwood.com.

Pittsburgh furniture maker wins award

Pittsburgh-based furniture maker Mike Korsak was awarded First Prize in Craft for his walnut and bird's-eye maple cabinet at the Art of the State exhibit at The State Museum of Pennsylvania.

The cabinet was one of 126 pieces selected from nearly 1,600 entries.

The 48th annual Art of the State is recognized as the official state-wide juried competition for Pennsylvania artists.

Presented at The State Museum of Pennsylvania in Harrisburg, Art of the State showcases the talent, creativity and diversity of the state's established and emerging artists. The exhibit opened to the public June 28 and runs through September 13, 2015.

Korsak's has been exhibited in galleries and museums throughout the United States.

For more information, visit www.mikekorsak.com.

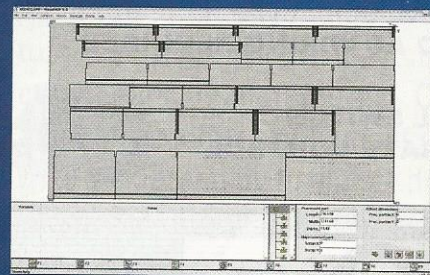
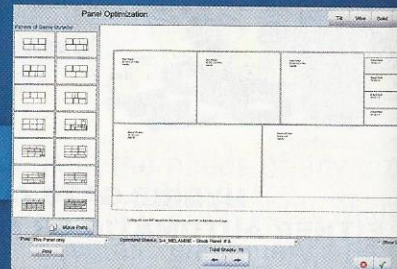
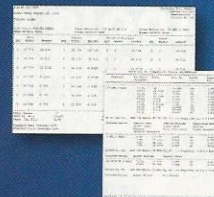
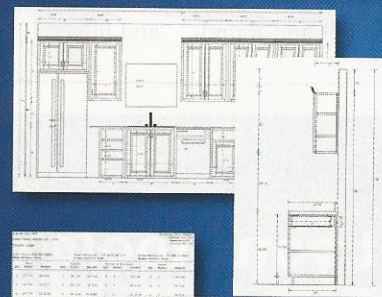
**Design and Manufacturing
Software For the Cabinet and
Door Industries since 1986**


CabinetPro®
SimplyPowerful®

**Come check out
our low prices**



**Simple
Powerful
Affordable**



**FREE Technical
Support!**

**NO Keys or
Dongles!**

**NO Yearly
Maintenance Fees!**

The All-In-One Software Solution

www.cabinetpro.com • (541) 664-2808